

# Active and Effective Water Security Programs

Marc Santora  
U.S. EPA, Water Security Division

July 31, 2006  
NARUC Staff Subcommittee on Water



## Mission:

The Water Security Division (WSD) provides national leadership in developing and promoting security programs that enhance the water sector's ability to prevent, detect and respond to and recover from **potential terrorist** or other **intentional acts**



Online Water Security  
Be informed. Be prepared.

# Water Security Program Drivers

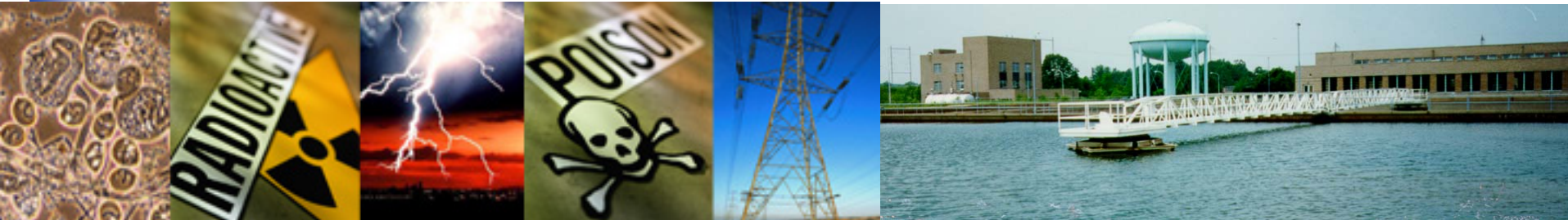
- Terrorists or others seek to compromise water systems through physical destruction, contamination, and cyber intrusion
- The water sector lacks certain tools and information that are necessary for adopting effective countermeasures
- The perception by some individuals that water security is a low priority
- Some entities in the water sector may lack the resources (technical, personnel) to implement security measures

- What is security for a water system?
  - Quantity
  - Access
  - Continuity of Service
  - Preparedness
  - Response and Recovery

# Be Ready!!!

The *National Drinking Water Advisory Council* (NDWAC) has identified **14 Features** essential for *water* and *wastewater* utilities for a security program that is:

**ACTIVE, EFFECTIVE, and SUSTAINABLE**



# NDWAC 14 Features

## Organizational

- Explicit Commitment to Security
- Promote Security Awareness
- Defined Security Roles and Employee Expectations

## Operational

- Vulnerability Assessment Up to Date
- Security Resources and Implementation Priorities
- Contamination Detection
- Threat-level Based Protocols
- Emergency Response Plan tested and Up to Date
- Utility-specific Measures and Self Assessment

## Infrastructure

- Intrusion Detection and Access Control
- Information Protection and Continuity
- Design and Construction Standards

## Collaborative

- Communications
- Partnerships



## Organizational

Feature 1. Explicit Commitment to Security

Feature 2. Promote Security Awareness

Feature 5. Defined Security Roles and Employee Expectations

## Operational

Feature 3. Vulnerability Assessment Up to Date

Feature 4. Security Resources and Implementation Priorities

Feature 7. Contamination Detection

Feature 10. Threat-level Based Protocols

Feature 11. Emergency Response Plan Tested and Up to Date

Feature 14. Utility-specific Measures and  
Self Assessment



## Infrastructure

Feature 6. Intrusion Detection and Access Control

Feature 8. Information Protection and Continuity

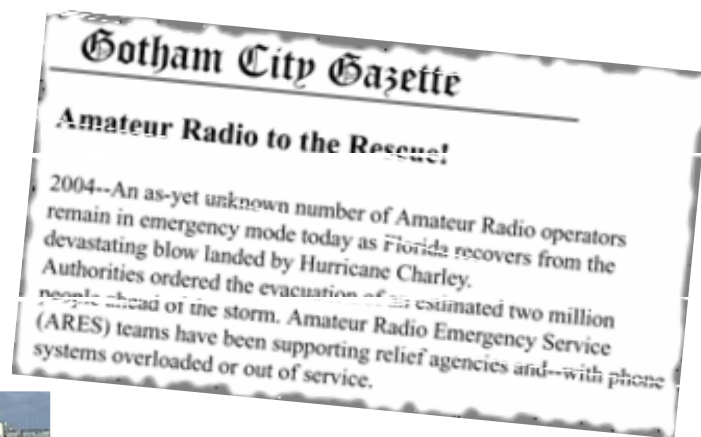
Feature 9. Design and Construction Standards



## Collaborative

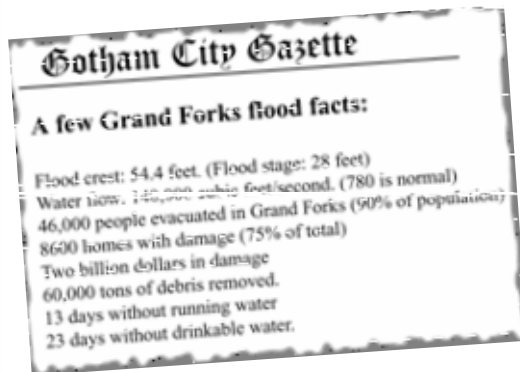
Feature 12. Communications

Feature 13. Partnerships



# Incorporate Security into Emergency Response Plans

In your experience, how do Boards and Managers create opportunities or barriers for emergency response?



# Partnerships with NARUC at the local level...

- How would you define the role of Commissioners in water security?
- How can WSD Partners work on water sector security with Commissions?
- What are the best methods for outreach?

## Contact Information:

Marc Santora  
U.S. EPA, Water Security Division  
202-564-1597  
[santora.marc@epa.gov](mailto:santora.marc@epa.gov)

Visit our website at:  
<http://epa.gov/watersecurity>