

NARUC Winter Meeting
TXU BPL Initiative



TXU
Electric Delivery

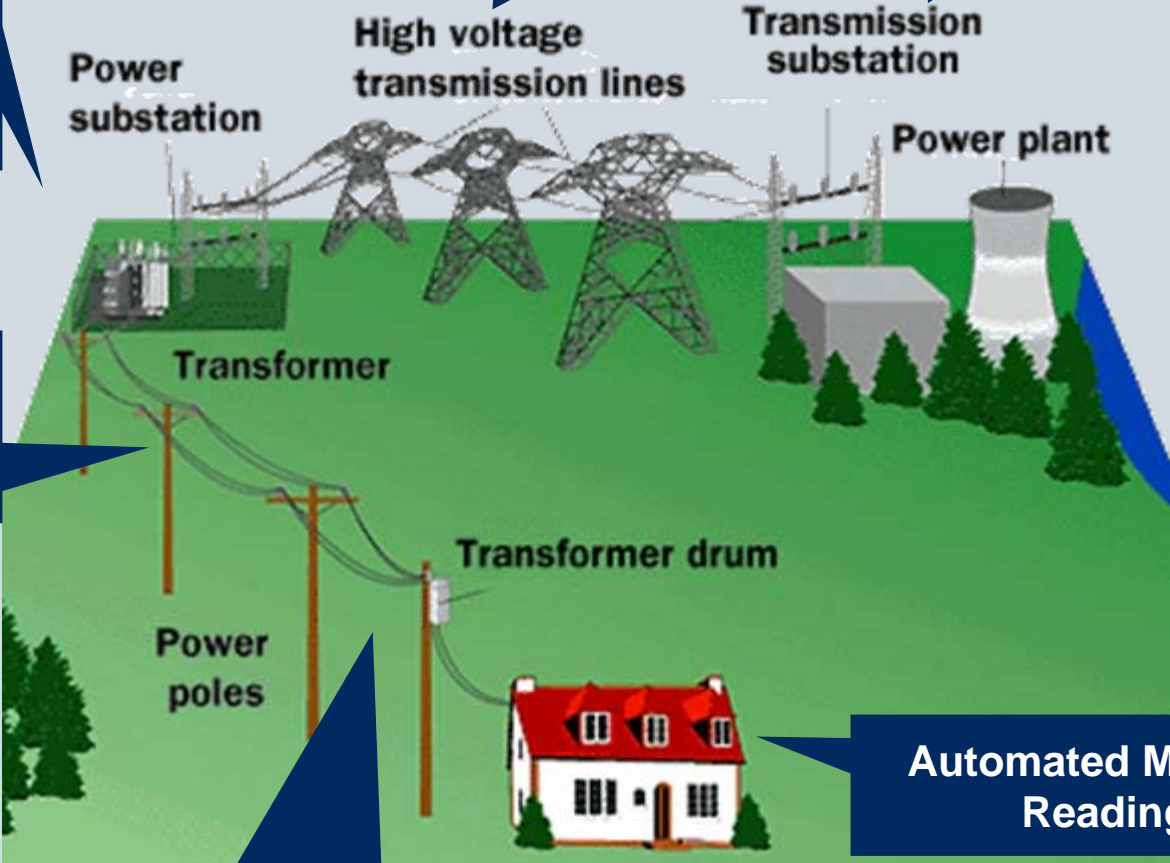
Steve Houle
Vice President
Corporate Technology & Development

Creating The 21st Century Grid

Advanced substation equipment monitoring and video security

Transmission superconductivity

Digital protection and control

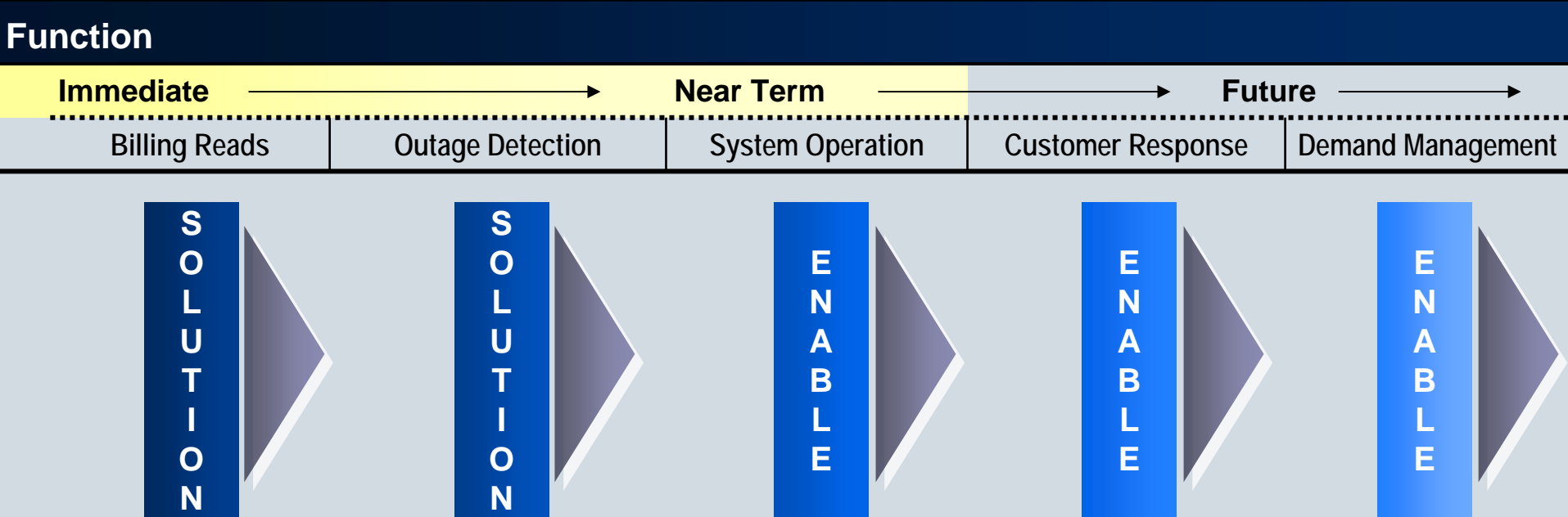


Digital fault analysis; self-healing grid

Automated Meter Reading

Broadband over Powerlines

Smart Grid Benefits - Timeline



Benefits

Immediate		Near Term		Future	
Redeploy Operating Capital to Maintenance	Reduced Costs to Restore Service	System Monitoring	Automated Service Order Completion	Appliance Control	
Reduced Risks	Reduced Time to Restore	Load Shifting	Customer Use Access	Demand Management	
Improved Reliability (Eliminates SKIPS)	Improved SAIDI	Improved Asset Utilization	Pre-Payment	Market Design	
Customer Security	Improved Customer Satisfaction	Reduced Asset Costs	Reduced Cost	Direct Customer Interaction	
		Improved Reliability	Quicker Response		

Senate Bill 5 – Key Enabling BPL Provisions



It is in the public interest to encourage the deployment of BPL

A utility may choose to implement BPL, but is not required to do so.

Municipality shall not have jurisdiction over the BPL system, services, construction, operation, or maintenance. Texas BPL policies should provide regulatory certainty and remove barriers to entry.

No additional fees, franchises, or easements required for BPL system

BPL services to utilities are eligible expenses in rate cases

CATV pole attachment rate is just & reasonable

BPL Utility Services Benefits



Advanced Metering

- Reduced meter reading and field service O&M
- Automated disconnect (reconnect)
- Outage restoration verification

Network Monitoring

- Improved system operational responsiveness
- Reduced reactive transformer maintenance costs
- Improved outage information

Substation Automation Services

- Enhanced communications and control of substations
- Enables additional substation monitoring technologies
- Reduced leased circuits for substation communications