
Current Communications Group

Broadband over Powerline (BPL) Communications

**NARUC Summer Meeting
Salt Lake City
July 13, 2004**



Current Communications Group is a BPL communications company focused on both BPL services and equipment



Current uses BPL to provide end-to-end communications services and enhanced utility services using the existing power grid

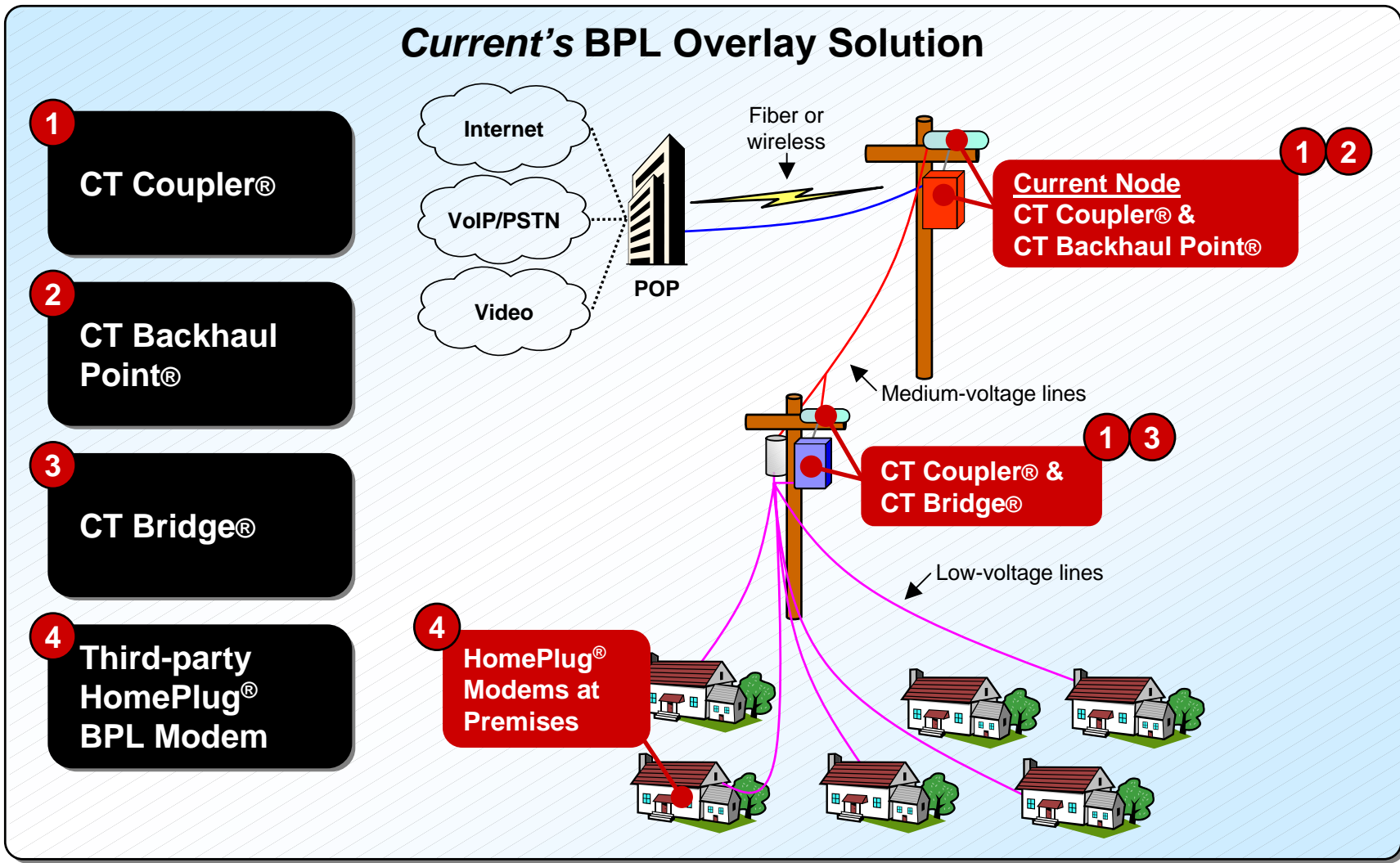
Communication services to residential / business customers

- Broadband data
 - 2-6 Mbps net symmetrical data rate today
 - 50+ Mbps in next generation
- Voice (VoIP) services
- REAL plug-and-play with NO truck roll to the customer premises
- All electrical outlets in home / office are communication outlets and form a single local area network (LAN)
- Other applications include Internet gaming and Internet radio
- Next generation of BPL will support digital video programming services

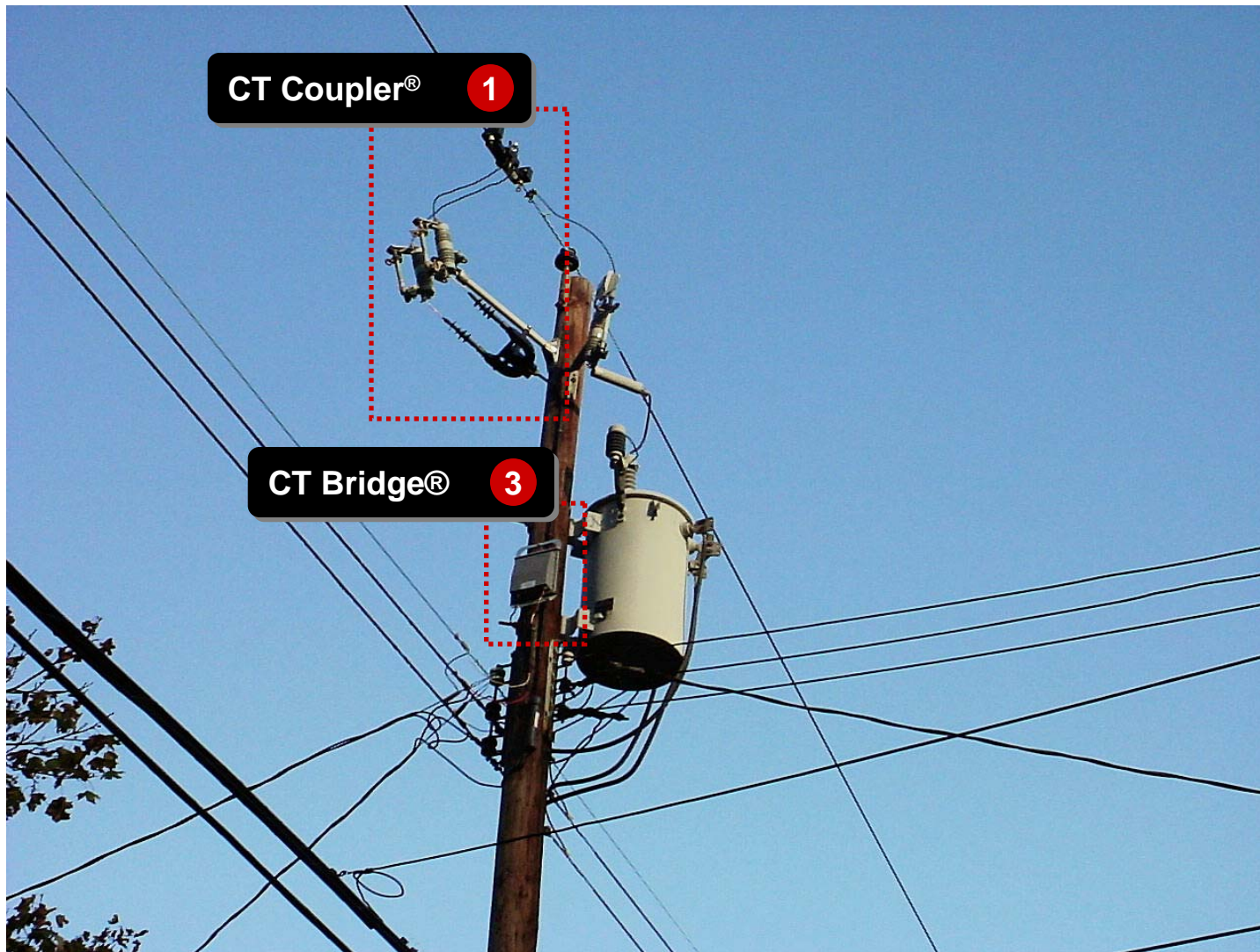
Enhanced services available to electric utilities

- BPL modernizes critical US infrastructure by improving the security, reliability and efficiency of power distribution networks
- Outage and restoration detection
- Network security and monitoring
- Transformer overload detection
- Meter theft and tamper detection
- Automated meter reading
- Power quality monitoring
- Demand-side management

Current's BPL solution overlays on the distribution portion of the electric utility network to provide communications services



Actual installation of CT Coupler[®] and CT Bridge[®] at an aerial transformer



Actual installation of CT Coupler™ and CT Bridge™ at an underground transformer



BPL regulatory overview

- Work within the regulatory framework of each state
 - Use of regulated utility resources follows state and federal rules
 - Poles, line crews, joint marketing / billing and rights of way (ROWs)
 - Enhanced Power Distribution Services (EPDS) improve network reliability, security, efficiency and consumer services
 - EPDS examples include power outage / restoration detection, automated meter reading (AMR), power quality monitoring and demand-side management
- FCC's Part 15 rules regarding RF emissions apply
 - FCC has confirmed that interference potential for properly designed BPL systems is low