



Broadband Data and Mapping: Recommendations of the California Public Utilities Commission

Presented by Commissioner Rachelle Chong

Presentation to:
National Association of Regulatory Utilities Commissioners
July 21, 2009

Importance of Broadband Mapping



- Broadband mapping is an important tool
 - Provides visual representation
 - Where is broadband is and is not available
 - Subscription data
 - Speed comparison
 - Comparison within and across states
 - Provides direction to target funds to unserved and underserved areas
 - Determine areas with poor adoption
 - Allows better understanding of competition in specific areas
 - Snapshot provides baseline to set goals and measure progress

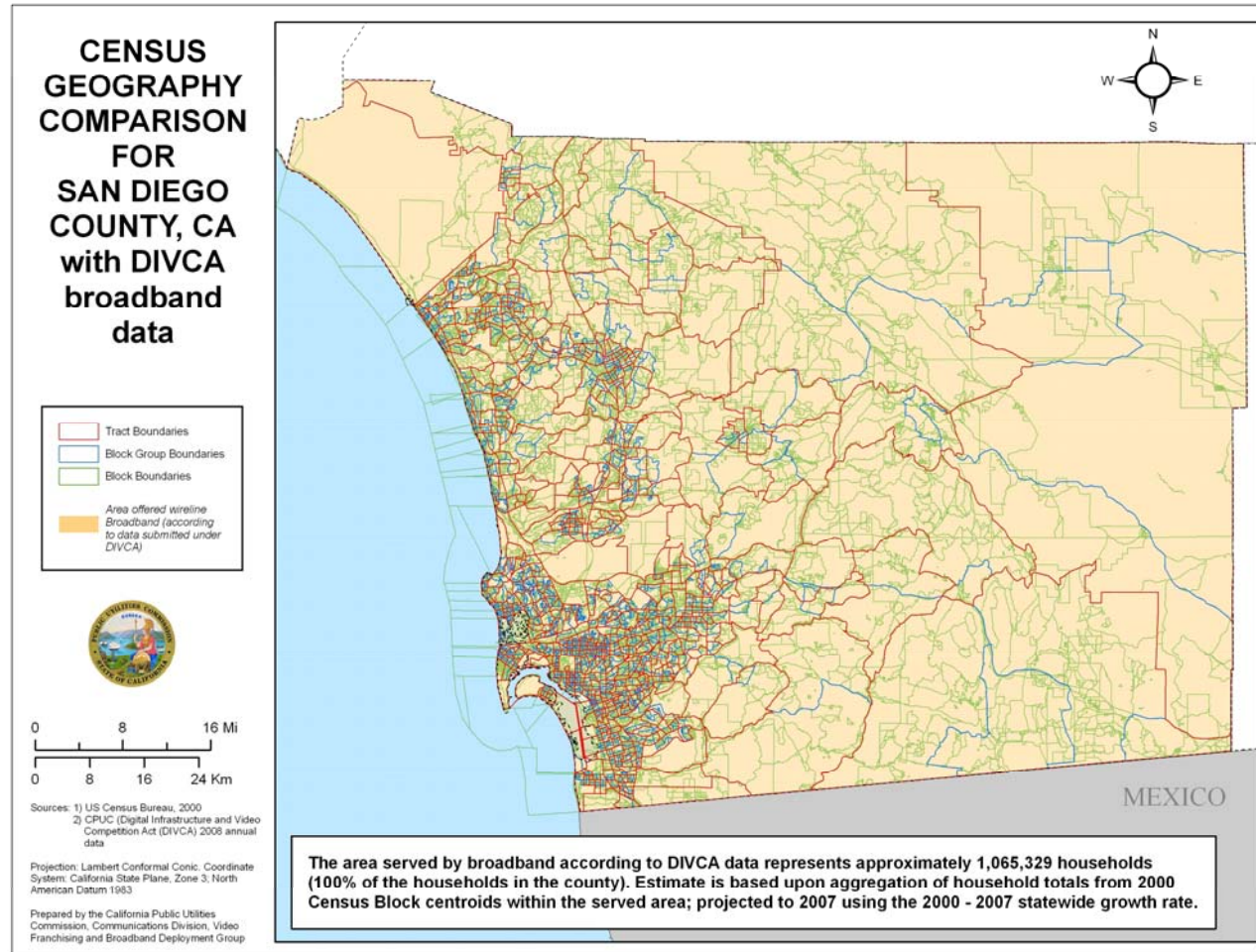
Improve Data Collection



- FCC Broadband Data collected via Form 477
- Current Form 477 data collection method should be revised
 - Collect broadband availability and adoption data
 - Unserved / Underserved
 - Adoption rates
 - Change the level of granularity at which data is collected
 - Currently collected by Census Tract – too big!
 - Recommend collecting data at the Street-Address level
 - Included a couple of maps to illustrate:

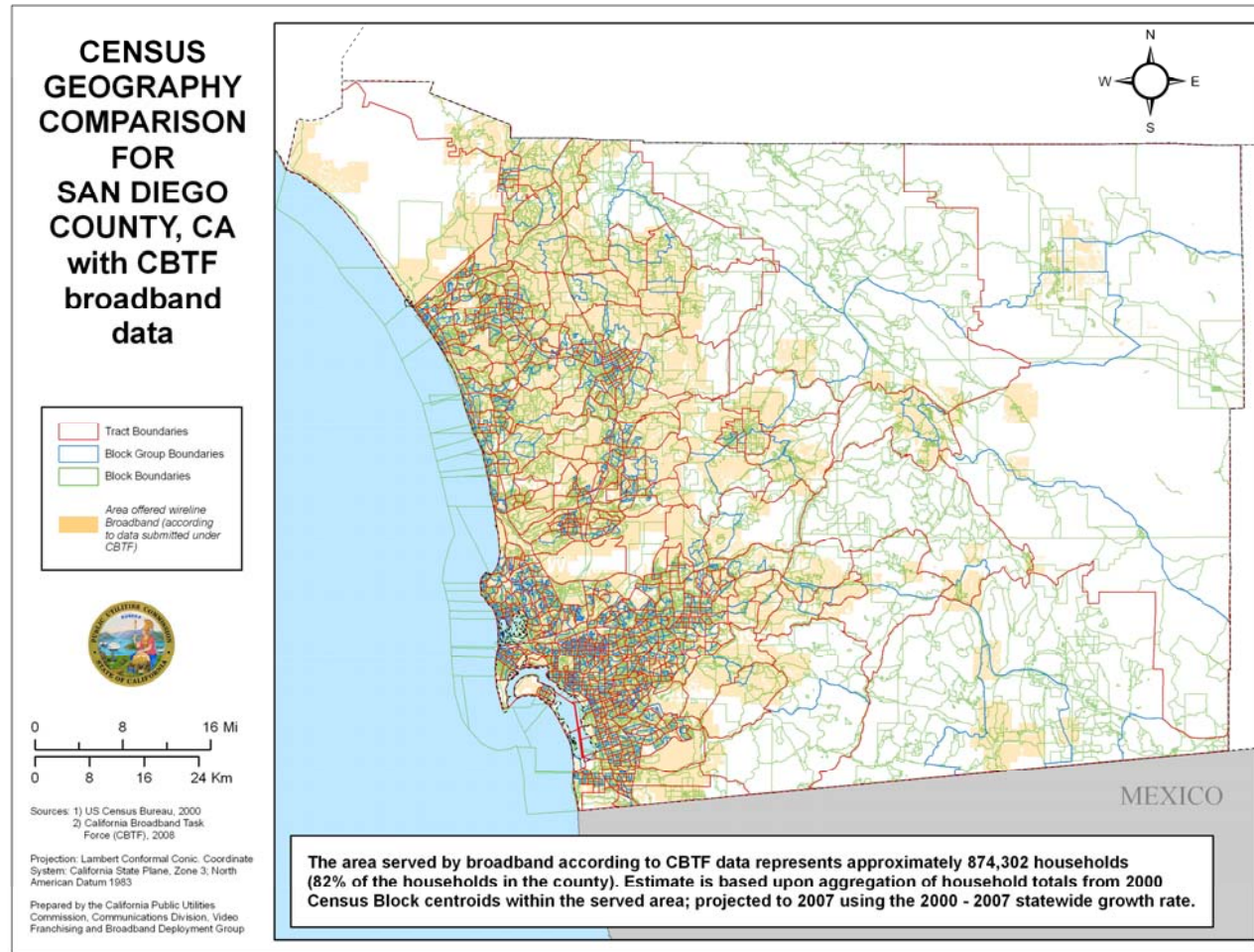
Subscriber Data and Mapping

Data Collected by Census Tract



Subscriber Data and Mapping

Data Collected by Street-Address



FCC Subscriber Data and Mapping



- FCC released an NOI for developing a National Broadband Plan on April 8, 2009
 - Sought comment on Broadband mapping
 - The CPUC submitted comments on the following topics:
 - Broadband data collection process
 - Characteristics of a national map
 - Important map layers
 - Proprietary information

California Positions for National Broadband Map



- A National Broadband Map should be available to the public
 - ❑ Should be searchable by county, zip code, governmental boundaries or street address
 - ❑ Should contain broadband availability, subscribership, infrastructure, and standardized census data.
 - ❑ Confidential data should be aggregated

Important Map Layers



- California intends to map and believes the National Broadband Map should contain the following base layers:
 - ❑ Parcel
 - ❑ Street Addressing (also know as the Master Street Address File)
 - ❑ Government Units
 - ❑ Cultural and Demographic Statistics
 - ❑ Elevation

Proprietary Information



- Protecting confidential data of service providers is important
 - Data should be mapped to the square $\frac{1}{4}$ kilometer to protect individual provider data
 - Data collected via the FCC's Form 477 should be available to the states in its raw form
 - This data should be available to states simultaneous to the FCC's biannual collection periods

State Broadband Data and Development Grant Program



- NTIA released a Notice of Funds Availability (NOFA) on July 8, 2009
- State Broadband Data and Development Grant Program
 - ARRA allocated \$350 Million for state mapping programs
 - NOFA limits each state grant to no more than \$3.8 million over five years
 - One approved applicant per state
 - Designated by Governor
 - CPUC to be designated for California
 - Awardees must provide at least 20% non-federal matching funds.

State Broadband Data and Development Grant Program



- Awardees required to submit broadband availability and subscribership data to the NTIA
 - Geographic area where broadband is available
 - Speeds
 - Technology
 - Availability at public schools, libraries, hospitals, colleges, etc.
- Submitted at the street address level

California Implementation of BDIA



- Data request to all California broadband providers to:
 - Gather address-level data on:
 - Broadband Availability, Technology, Speed, Infrastructure, ARPU, and Spectrum used
 - Resulting Maps will supplant dated California Broadband Task Force Maps
 - Searchable by address
 - Will include type and speed of service
 - Providers may choose to keep their identities confidential

California Implementation of BDIA



- Tight Timeline for States and Broadband Providers
 - NTIA preference for the provision of a substantially complete set of **availability** data by November 1, 2009
 - Required to provide a substantially complete set of **all** broadband mapping data on or before February 1, 2010
 - Must finish by March 1, 2010